



## Porta Fira\*\*\*\* Hotel

The Santos Porta Fira Hotel, just opened in 2010, is located in one of major development area of Barcelona, in L'Hospitalet, opposite to the Exhibition Centre of Fira Gran Vía, with unsurpassable accesses to the centre of Barcelona and to the Prat airport of Barcelona.

The new establishment of Santos Hotels is a great attraction for the business world, the Hotel Porta Fira has 320 rooms and suites equipped with the last technology, restaurant, wellness area and several meetings rooms with a polyvalent plenary room of 800 m2 diaphanous with a height of 5 meters, which it will allow to celebrate any type of event.

The Santos Porta Fira Hotel is a work of the prestigious Japanese architect Toyo Ito, famous for being the author of other modern designs in the area as the extension of the Barcelona Fira Gran Via (exhibition Centre) as well as winner of several international architecture awards.

This ultramodern building has 24 floors with a height of 110 meters in a red colour, because The Porta Fira Hotel is recognized as one of the architecture icons of the city as well as the new Barcelona Skyline.

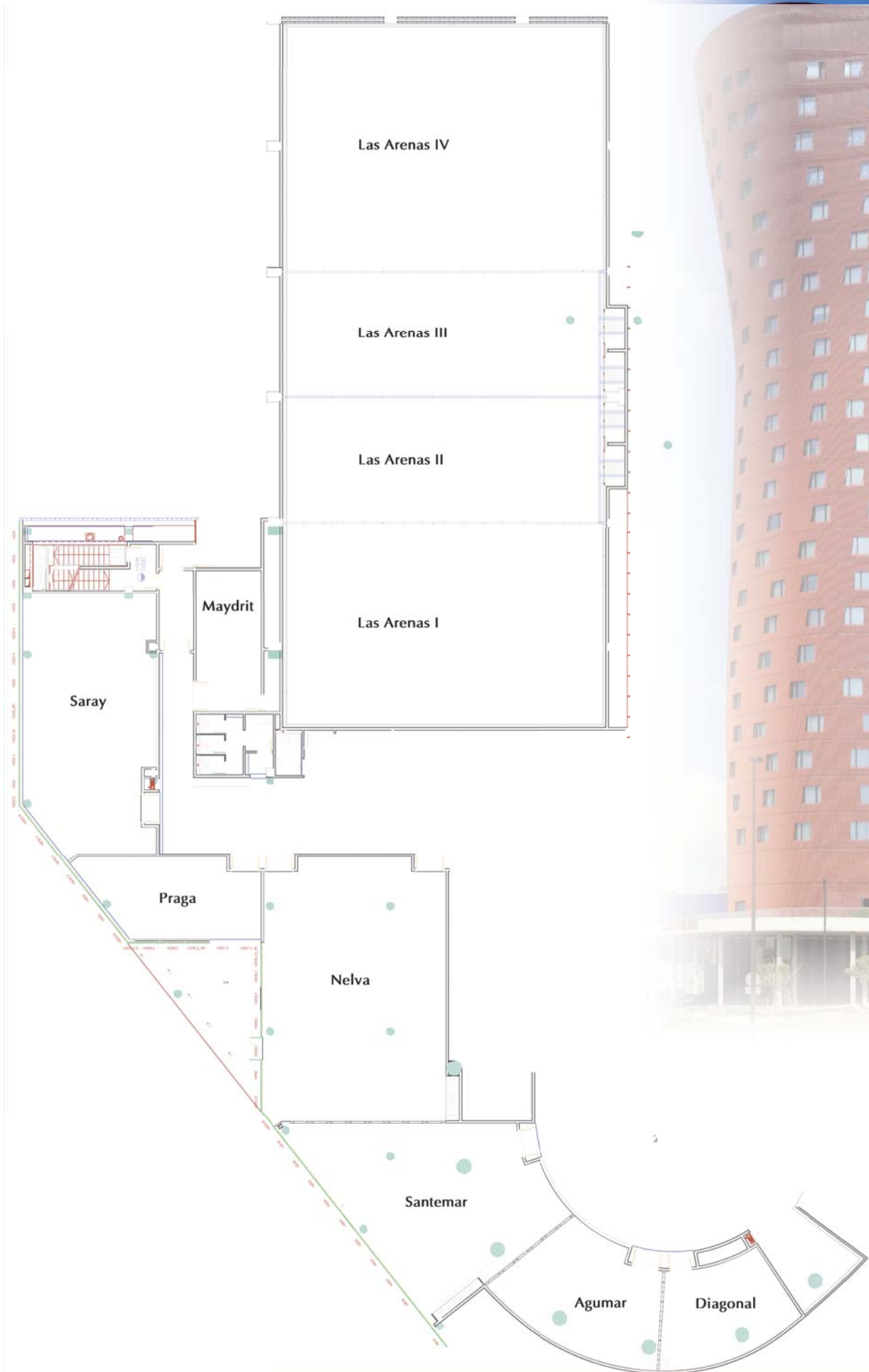
---

### MEETING ROOMS

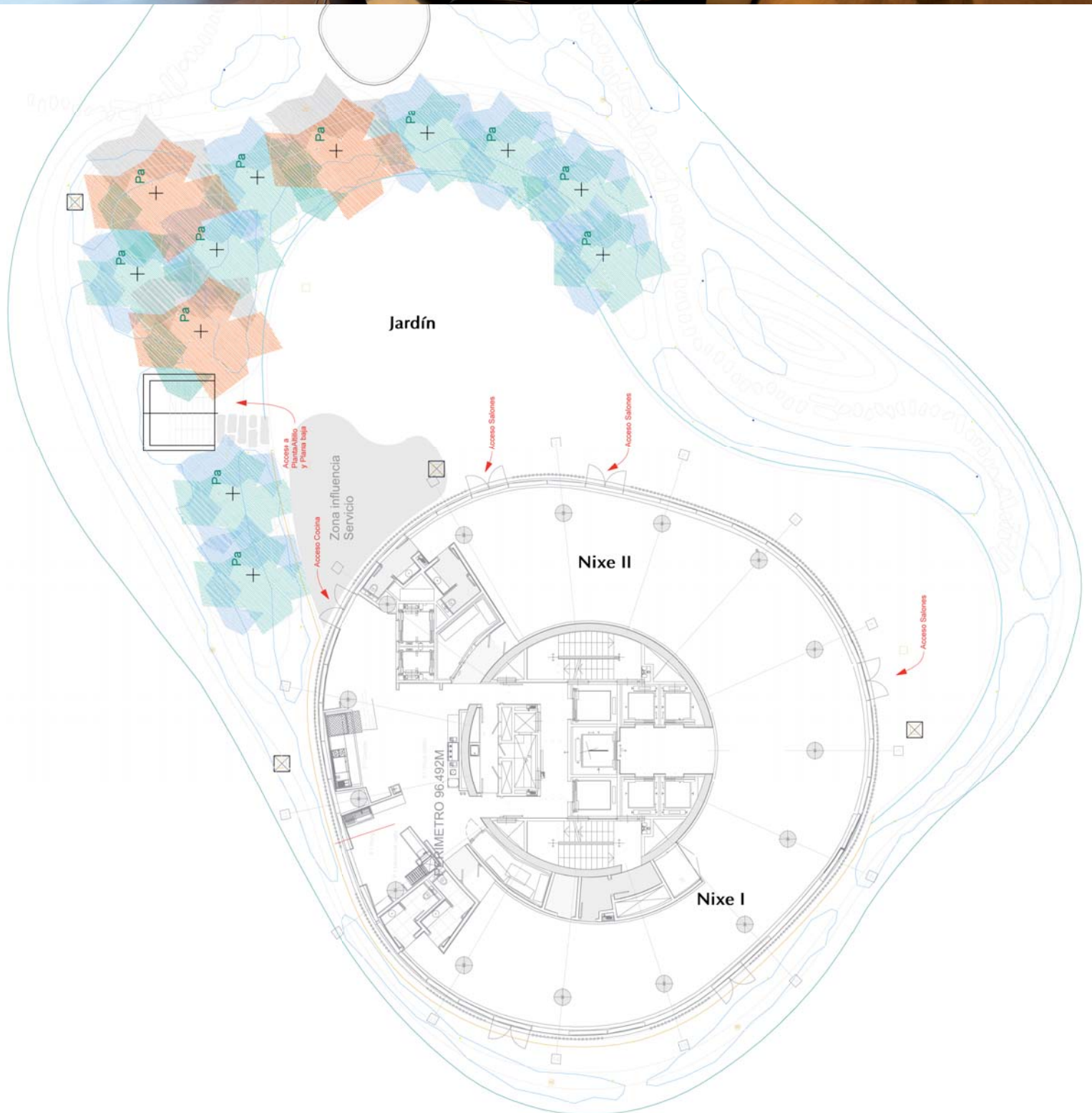
The meetings rooms of the Porta Fira Hotel are magnify spaces destined to fulfill all our clients' needs.

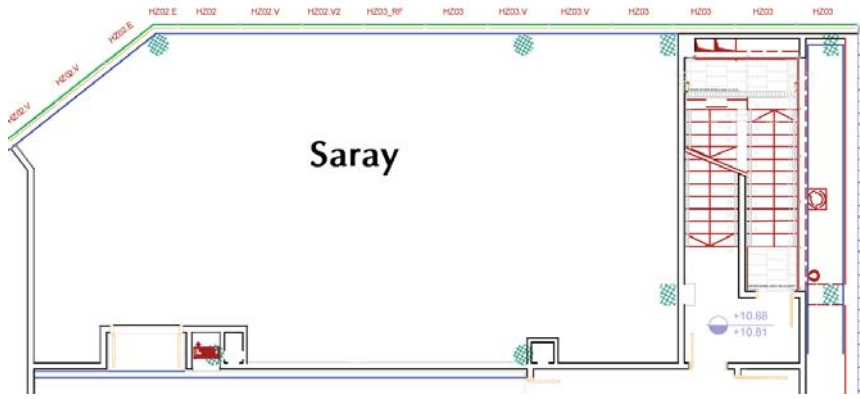
A total area of meeting rooms superior to 2.000 m2 divided in spaces from the 32 m2 to 780 m2 to cover all types of events in which the Porta Fira Hotel will be the perfect place for business development.

All the meeting rooms are full equipment to any type of event that you want to celebrate with us and our team of professionals that the will guaranteed the success of all your celebrations.



# MEETING ROOMS · Porta Fira\*\*\*\* Hotel





## Meeting Room SARAY

Size: 119 m<sup>2</sup> - Height: 3,2 m

Capacity of meeting rooms according to the disposition:

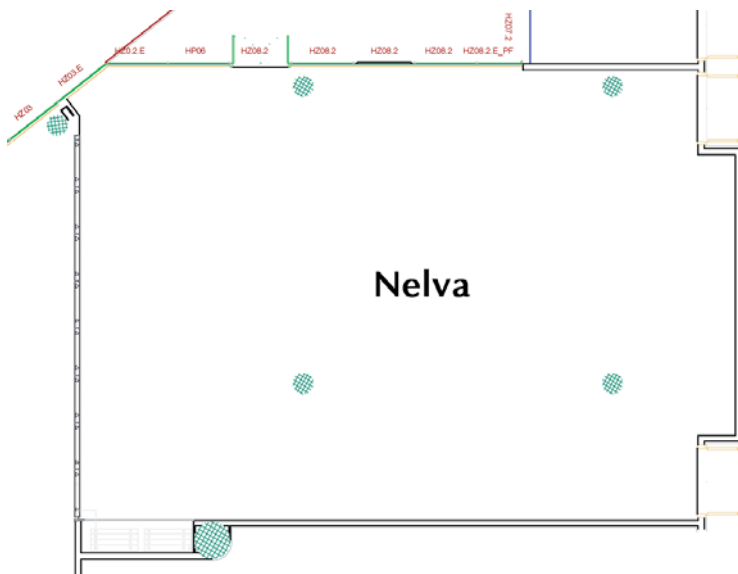
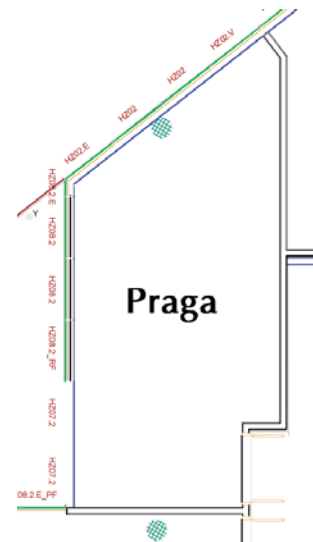
Cocktail	School	Theatre	Boardroom	U shape	Banquet	Cabaret
95	46	101	32	28	80	48

## Meeting Room PRAGA

Size: 48 m<sup>2</sup> - Height: 3,2 m

Capacity of meeting rooms according to the disposition:

Cocktail	School	Theatre	Boardroom
35	16	25	16

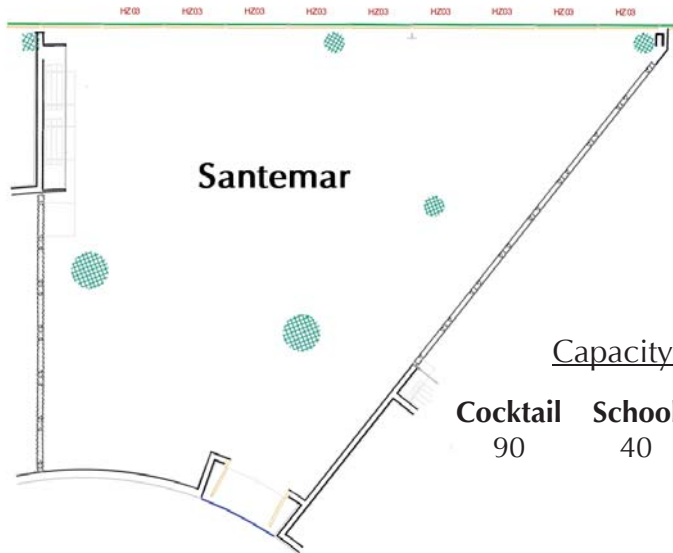


## Meeting Room NELVA

Size: 172 m<sup>2</sup> - Height: 3,2 m

Capacity of meeting rooms according to the disposition:

Cocktail	School	Theatre	Boardroom	U shape	Banquet	Cabaret
140	54	167	32	34	120	72



## Meeting Room SANTEMAR

Size: 117 m<sup>2</sup> - Height: 3,2 m

Capacity of meeting rooms according to the disposition:

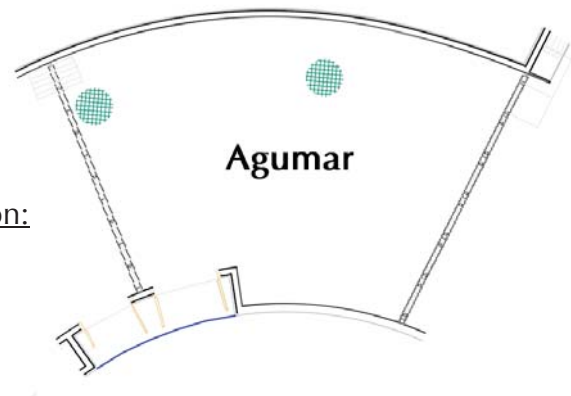
Cocktail	School	Theatre	Boardroom	U shape	Banquet	Cabaret
90	40	77	22	20	90	48

## Meeting Room AGUMAR

Size: 59 m<sup>2</sup> - Height: 3,2 m

Capacity of meeting rooms according to the disposition:

Cocktail	Theatre	Boardroom
40	47	16



## Meeting Room DIAGONAL

Size: 37 m<sup>2</sup> - Height: 3,2 m

Capacity of meeting rooms according to the disposition:

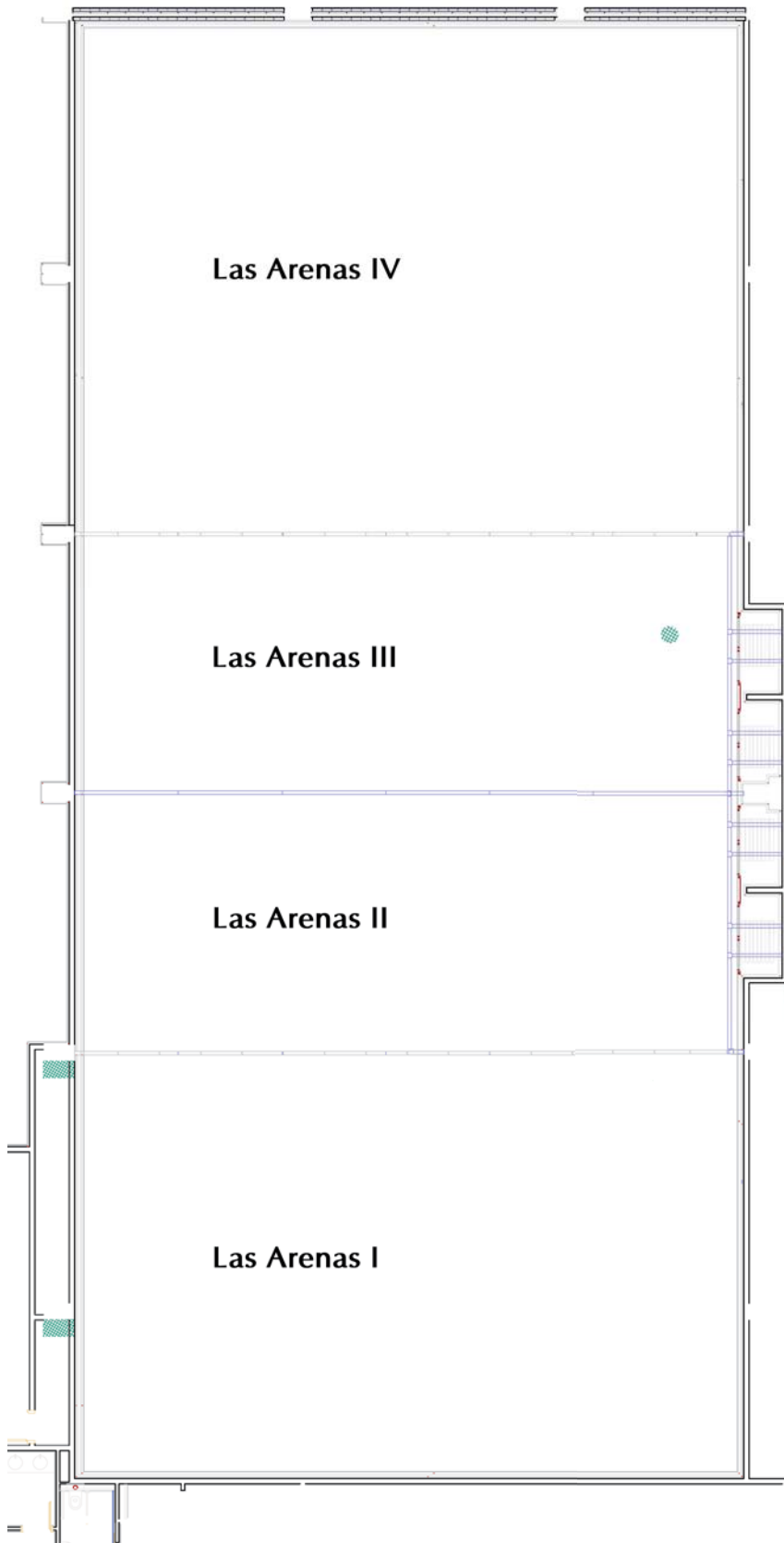
Cocktail	Theatre	Boardroom
37	33	16



## Office MAYDRIT

Size: 32 m<sup>2</sup> - Height: 3,2 m





## Meeting Room LAS ARENAS IV

Size: 275 m<sup>2</sup> - Height: 5,3 m

Las Arenas IV

## Meeting Room LAS ARENAS III

Size: 137,5 m<sup>2</sup> - Height: 5,3 m

Las Arenas III

## Meeting Room LAS ARENAS II

Size: 137,5 m<sup>2</sup> - Height: 5,3 m

Las Arenas II

## Meeting Room LAS ARENAS I

Size: 229 m<sup>2</sup> - Height: 5,3 m

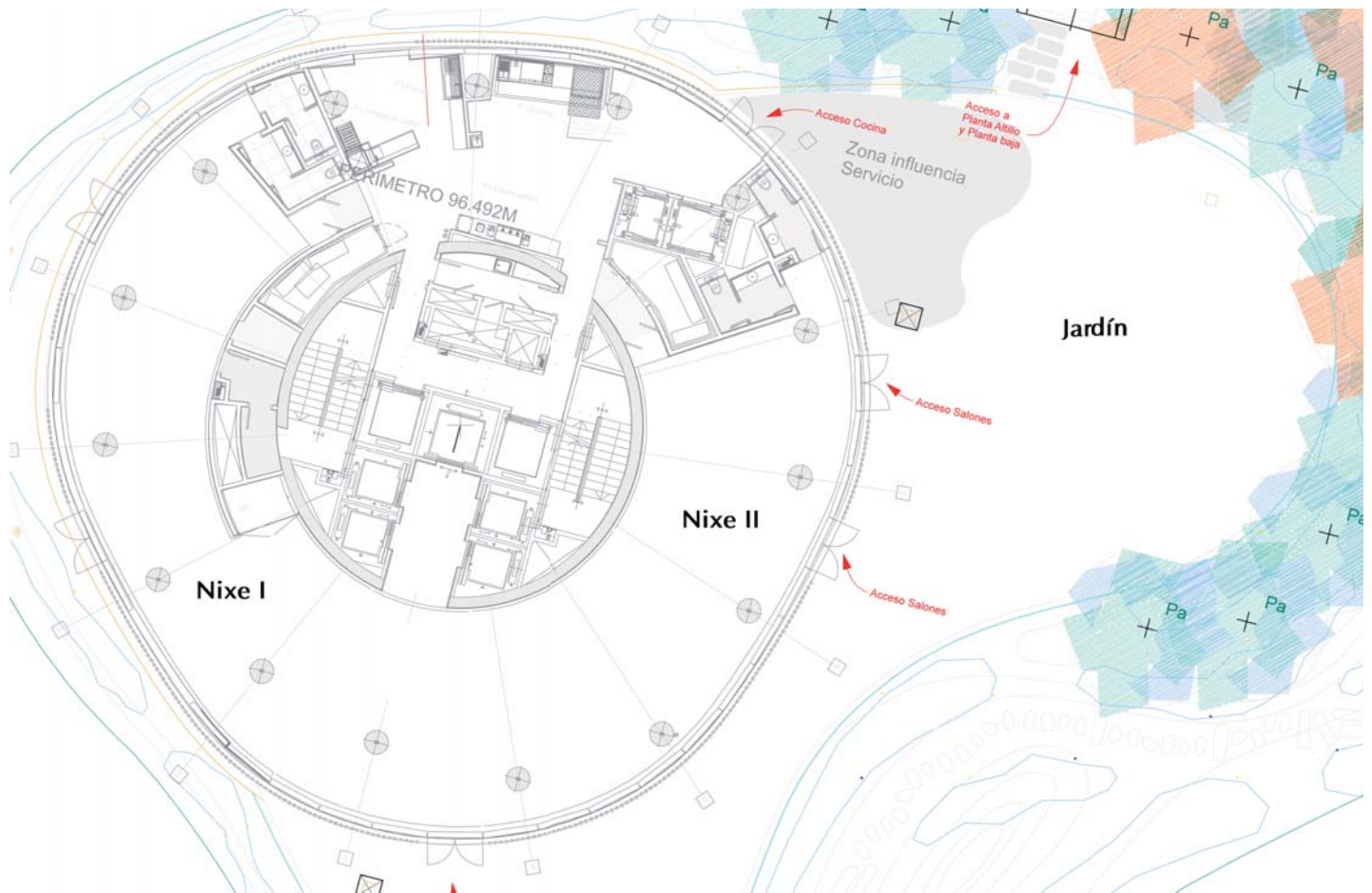
Las Arenas I

## Meeting Room LAS ARENAS

Size: 787,5 m<sup>2</sup> - Height: 5,3 m

Capacity of meeting rooms according to the disposition:

	Cocktail	School	Theatre	Boardroom	U shape	Banquet	Cabaret
Las Arenas I	190	110	240	40	44	150	90
Las Arenas II	126	66	135	40	40	100	60
Las Arenas III	126	66	135	40	40	100	60
Las Arenas IV	249	132	300	40	46	200	120
<b>LAS ARENAS</b>	<b>740</b>	<b>380</b>	<b>810</b>	-	-	<b>550</b>	<b>330</b>



## Meeting Room NIXE I

Size: 145 m<sup>2</sup> - Height: 2,9 m

## Meeting Room NIXE II

Size: 152 m<sup>2</sup> - Height: 2,9 m

## Meeting Room NIXE

Size: 346 m<sup>2</sup> - Height: 2,9 m

## JARDIN

Size: 340 m<sup>2</sup>

Capacity of meeting rooms according to the disposition:

	Cocktail	Banquet
Nixe I	120	50
Nixe II	125	70
<b>NIXE</b>	<b>280</b>	<b>170</b>
Jardín	240	160

## Summary of measures and capacities of meeting rooms

Meeting Rooms	Size	Height	Cocktail	School	Theatre	Boardroom	U Shape	Banquet	Cabaret
Diagonal	37	3,2	37	-	33	16	-	-	-
Maydrit	32	3,2	-	-	-	-	-	-	-
Praga	48	3,2	35	16	25	16	-	-	-
Agumar	59	3,2	40	-	47	16	-	-	-
Santemar	117	3,2	90	40	77	22	20	90	48
Saray	119	3,2	95	46	101	32	28	80	48
Nelva	172	3,2	140	54	167	32	34	120	72
Las Arenas I	229	5,3	190	110	240	40	44	150	90
Las Arenas II	137,50	5,3	126	66	135	40	40	100	60
Las Arenas III	137,50	5,3	126	66	135	40	40	100	60
Las Arenas IV	275	5,3	249	132	300	40	46	200	120
Las Arenas	787,50	5,3	740	380	810	-	-	550	330
Nixe I	145	2,9	120	-	-	-	-	50	-
Nixe II	152	2,9	125	-	-	-	-	70	-
Nixe	346	2,9	280	-	-	-	-	170	-
Jardín	340	-	240	-	-	-	-	160	-

